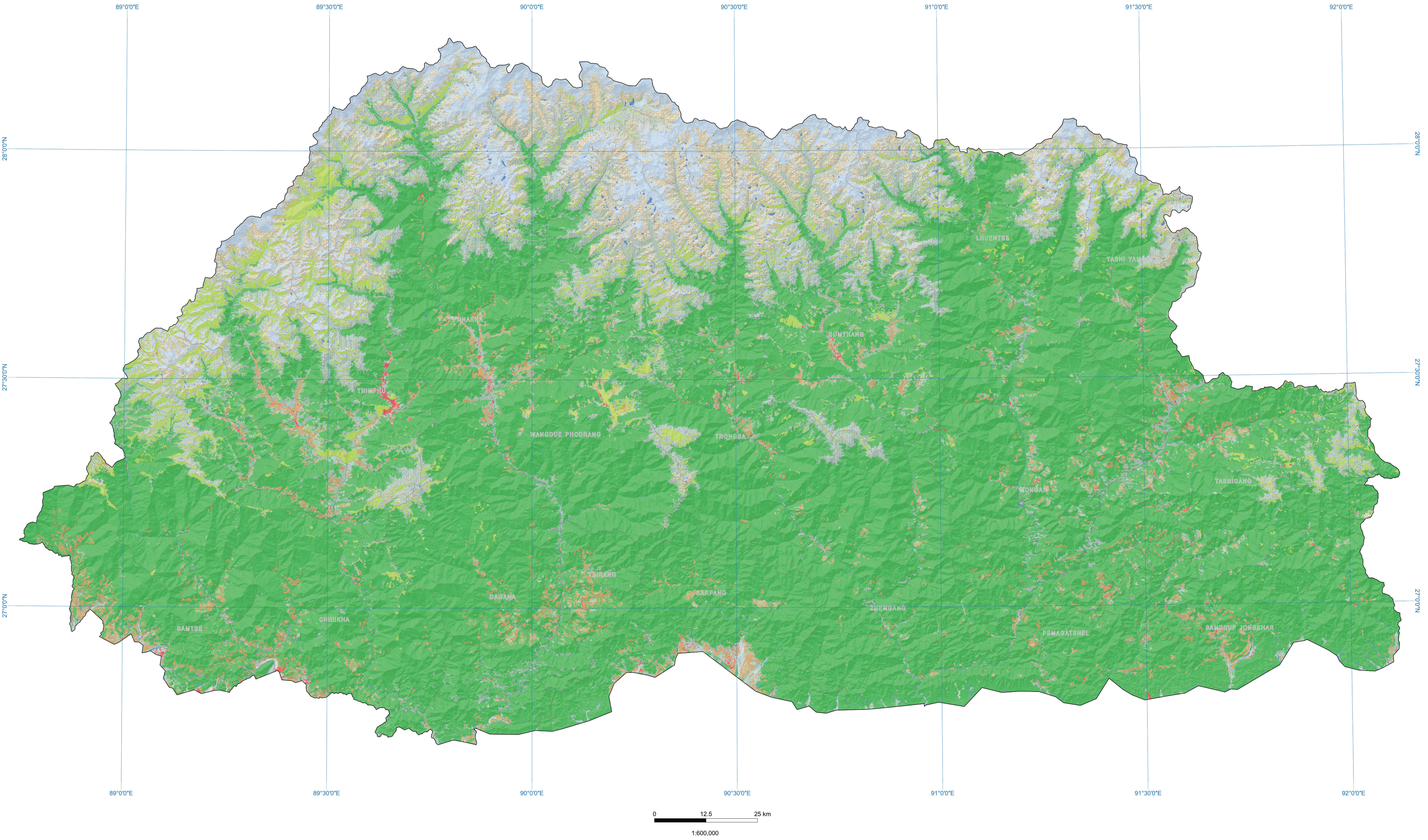
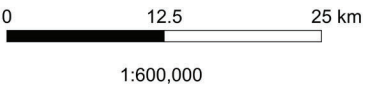


# Land Use Land Cover



- |                     |                   |                |                   |
|---------------------|-------------------|----------------|-------------------|
| □ Dzongkhag centers | forest            | alpine scrubs  | waterbodies       |
| ■ builtup           | meadows           | landslides     | snow and glaciers |
| ■ non-built-up      | agricultural land | rocky outcrops | sandy bank        |
|                     | shrubs            | moraines       |                   |



**Information of LULC map**  
The information displayed on the map originates from the *Sentinel-2 satellite image* captured between November and December 2020, with a spatial resolution of 10 meters. Prior to visualization, the data underwent pre-processing in the *Sen2Cor processor*, a part of the *Sentinels Application Platform (SNAP)*. This pre-processing involved converting the Level-1C radiance data (top-of-atmosphere) to Level-2A surface reflectance data (bottom-of-atmosphere). The processing, analysis, and visualization of the data were carried out using *eCognition v9.5*, *ERDAS IMAGINE*, and *QGIS* software.

The images are acquired in the *WGS 1984 UTM Zone 45N and 46N* coordinate systems, but they were re-projected to the *DRUKREF03 Bhutan National Grid* coordinate systems. It is essential to note that the boundaries and names depicted on this map are based on information provided by the respective responsible agency, and they maintain the sole source of truth for this data. The geographic information contained within this map does not hold any legal connection to laws, rules, or regulations concerning land use or land ownership. *NLCS* disclaims any liability for errors that may arise due to user interaction with this map.

